

RTR500BM: Getting Ready

① Preparing a SIM Card

Please purchase a SIM card that meets the following requirements:

- Size: Nano SIM*1
- The card has been or can be activated
- SIM which supports 4G data communication*2 *3
- Contracted SIM card with a minimum speed of 200Kbps

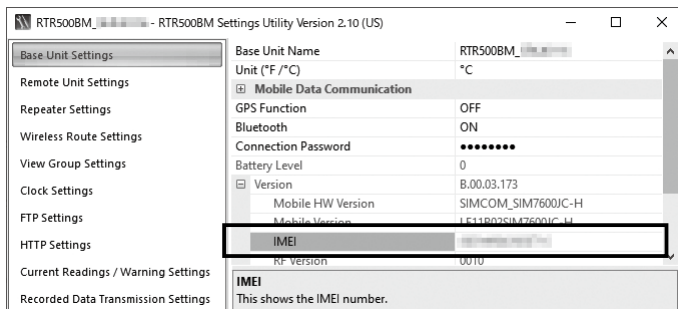
*1: For the supported SIM cards, contact your local T&D distributor.

*2: If you wish to receive warning messages via SMS, then you will need a card/contract supporting SMS.

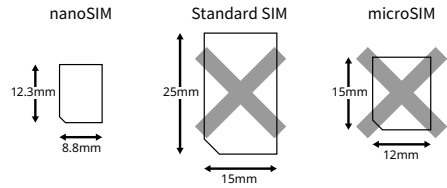
*3: The SMS warning function is supported by firmware version R.01.00.06 or later.

When purchasing a SIM card, you may be asked for the IMEI number. The IMEI number for your RTR500BM can be found in the software/app as shown below.

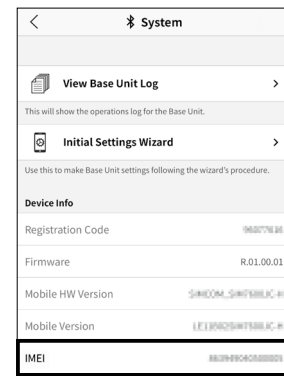
RTR500BM for Windows (PC Software) :
RTR500BM Settings Utility – [Base Unit Settings] – Version



* Make a USB connection between the RTR500BM and the PC with the software installed.



T&D 500B Utility (Mobile Application) :
System – Device info



* Make a Bluetooth connection between the RTR500BM and the mobile device with the app installed.

- Please contact the distributor from which you purchased the product.

tandd.com/purchasing/



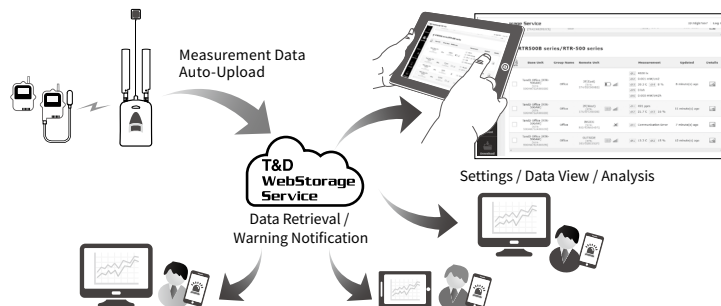
② Preparing a destination for data transfer

When using "T&D WebStorage Service" as your data destination:

By specifying T&D's free cloud service T&D WebStorage Service as the data transmission destination, you can monitor current readings, check recorded data, send e-mail alerts, and change settings from our smart device app.

* To use T&D WebStorage Service you must first complete User Registration.

www.webstorage-service.com/



When using a destination other than T&D WebStorage Service:

You can specify the transfer destination as your own Web server or an FTP server of your choice.

- For details see RTR500B Series Help, under [RTR500BM for Windows] – [Getting Ready]

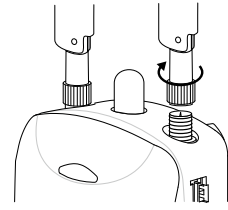
tandd.com/support/webhelp/rtr500b/eng/



③ Preparing the RTR500BM

Connect the Antennas

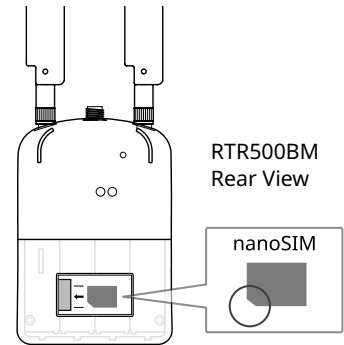
Remove the protective covers from the antenna connectors (LOCAL and CELLULAR) on the unit, and connect the supplied Antenna (CSR-0011).



Install the SIM Card

Place the SIM card with the IC (electrode) side down and the notch to the lower left, and slide it to the left.

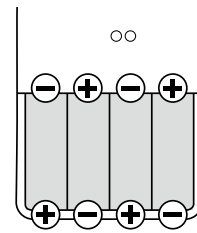
- Slide it completely left until you hear a “click” sound. Incomplete or improper insertion may cause insufficient contact with the IC and result in a communication error.
- When inserting or removing a SIM card, avoid exposure to static electricity.
- Before inserting or removing the card, make sure to disconnect all cables (AC adaptor, USB cable, and external power cable).
- Be careful not to touch or scratch the IC area of the card. This may cause poor contact.
- Make sure to insert the card in the proper direction.



Install the Batteries

Remove the battery cover and insert the supplied AA alkaline batteries. After inserting the batteries, close the battery cover.

- Make sure that + and - are in the correct direction.
- Leaving alkaline batteries in the unit for a long period of time may cause battery leakage and corrosion. When using as a backup source, we recommend that you change the batteries once every year.
- Make sure to use new batteries of the same kind.
- Keeping batteries in the unit allows a backup source of power in the event of power failure. If running only on batteries, the estimated battery life is about 3 days. For longer continuous operation, please use an external power source.



④ Preparing an External Power Supply

In addition to the supplied four AA alkaline batteries and AC adaptor, depending on usage needs power can be supplied from automobile batteries, etc. When using an external power supply, please use the optional battery connection adaptor (BC-0204)*.

* For more details about purchasing the optional battery adaptor (BC-0204), please contact the distributor from which you purchased the RTR500BM.

Optional Battery Connection Adaptor (BC-0204)

- Voltage: input DC9 - 38V, output DC5V
- Current: MAX 2A

