

RTR500BW + RTR-600 Setup Guide

Table of Contents

How the RTR500BW and RTR-600 Series are Used Together	2
Getting Ready	2
Installing the Software.....	2
Base Unit Settings:	
Using RTR500BW for Windows.....	3
Making Initial Settings for the Base Unit.....	3
Making Network Settings	4
Registering Remote Units.....	4
Installing the Device.....	5
Registering a Base Unit to T&D WebStorage Service	7
Remote Unit Settings:	
Using RTR-600 Settings Utility	8
Making Clock and Operational Settings.....	8
Creating Work Group Tables.....	9
Creating Item and User Tables.....	9
Creating Work Group Tables	10
Sending Work Group Tables to the Remote Unit.....	11
Data Management and Operation.....	13
Check Data sent to T&D WebStorage Service	13
Manage Data on PC.....	14
RTR500BW Specifications.....	16

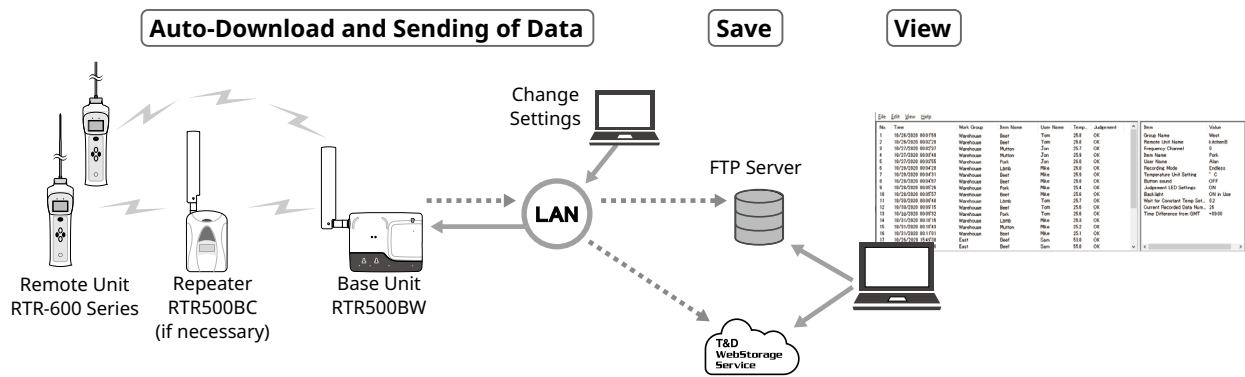
Terms used in this Guide

Base Unit	RTR500BW
Remote Unit	RTR-600 Series (RTR-602S / 602L / 602ES / 602EL, RTR-601-110 / 601-130 / 601-E10 / 601-E30)
Repeater	RTR500BC/ RTR-500 (when used as a Repeater)
Current Readings	The most recent measurements recorded by a Remote Unit*
Recorded Data	Measurements stored in the Remote Unit

* Current Readings are not available on the RTR-600 Series.

How the RTR500BW and RTR-600 Series are Used Together

RTR500BW is a Base Unit equipped with wired and wireless LAN functionality. It can be set up to periodically download recorded data from Remote Units (RTR-600 Series) and automatically send data to a server. Recorded data stored in the server can be viewed anytime and anywhere on a PC.



Getting Ready

Installing the Software

Download the following software from T&D's website and install to your computer.

* Do not connect the Base Unit to your computer until the software has been installed.

RTR500BW for Windows

For Base Unit Settings, Network Settings, Remote Unit Registration, etc. (p.3)

tandd.com/software/rtr500bwwin.html

RTR-600 Settings Utility

For Remote Unit Clock and Operation Settings, Table Settings, Data View, etc. (p.8)

tandd.com/software/rtr600-settings-utility.html

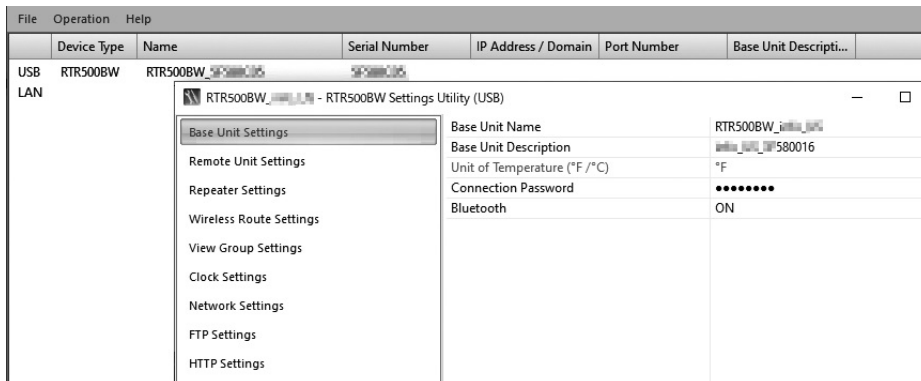
After installation is completed, you will see **RTR500BW for Windows** and **RTR-600 Settings Utility** in the Windows Start Menu.

Base Unit Settings: Using RTR500BW for Windows

STEP
1

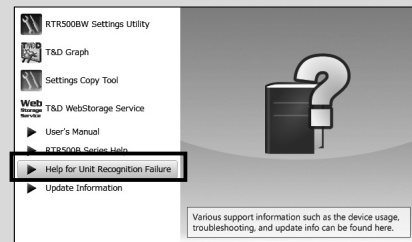
Making Initial Settings for the Base Unit

1. Open **RTR500BW for Windows**, and then open **RTR500BW Settings Utility**.
2. Connect the Base Unit with the supplied AC adaptor to a power source.
3. Connect the Base Unit with the supplied USB cable to your computer.
 - The USB driver installation will start automatically.
 - When the USB driver installation is completed, the settings window for your RTR500BW will automatically open.



If the above settings window does not appear automatically:

The USB driver installation may not have been installed correctly. Please see [Help for Unit Recognition Failure] and check the USB driver.



4. Enter the following information in the [Base Unit Settings] window.

Base Unit Name	Assign a unique name for each Base Unit.
Connection Password	Enter a password here for connecting to the Base Unit via LAN.

The factory default password is "password".

5. Check the contents of your selections and click the [Apply] button.
6. In the settings window under [Clock Settings], click the Current Time column to make settings in the Base Unit.
7. Check the contents of your selections and click the [Apply] button.

STEP 2

Making Network Settings

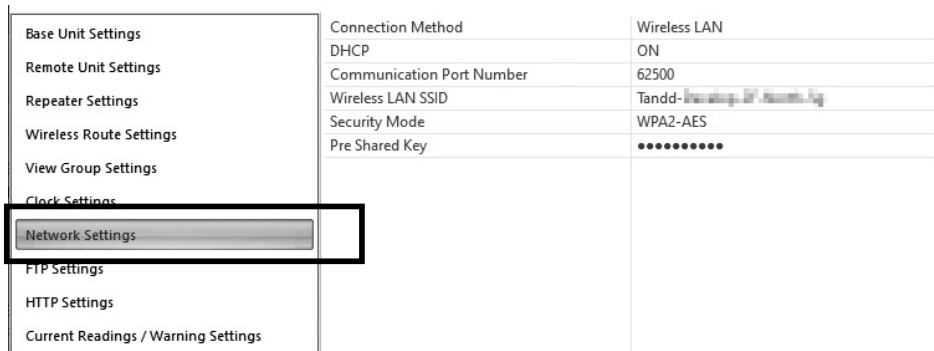
1. In the settings window, from [Network Settings] - [Connection Method], select [Wired LAN] or [Wireless LAN].

* Normally, there is no need to change the DHCP settings. Settings can be made according to the network environment being used.

2. When using a Wireless LAN:

Make settings for [Wireless LAN SSID], [Security Mode], and [Pre-Shared Key(password)].

* Normally, there is no need to change the Security Mode.



3. Check the contents of your selections and click the [Apply] button.

The operation will start with the following default settings.

- Recorded Data Transmission*: ON, Transmission Interval: 10 min.
- Current Readings Transmission: ON, Send at 6:00 am every day.

* RTR-600 Series does not support this function.

If you use the RTR500BW with RTR-600 Series only, change the Sending Current Readings setting to OFF.

By default, the settings for Auto Transmission of Recorded Data are as follows.

- Transmission Method: HTTP
- Connection Destination: T&D WebStorage Service

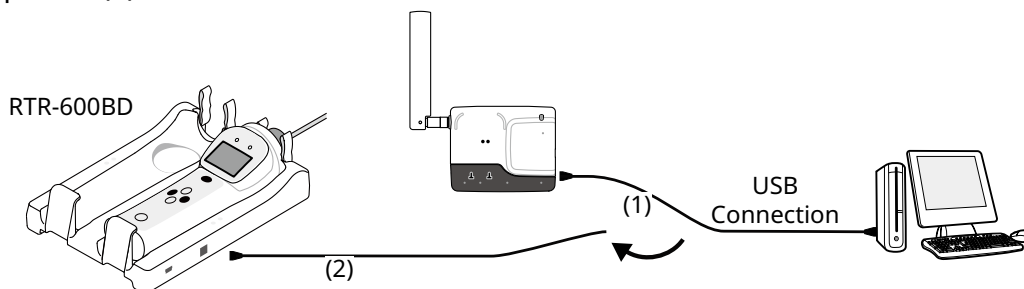
It is possible to change the destination of recorded data to any FTP server. For the setting items in the [FTP Settings] window, ask the administrator of the FTP server or refer to the instruction manual of the server.

STEP 3

Registering Remote Units

1. In the [Remote Unit Settings] window, click on the [Register] button.

2. When the [Connect a Remote Unit] dialog box appears, unplug the USB cable from the Base Unit (1) and plug it into the Battery Charge Dock* into which the Remote Unit has been placed (2).



* The Battery Charge Dock (RTR-600BD) needs to be purchased separately.


If the screen does not change after connecting the Remote Unit:

- Make sure to place the Remote Unit on the right side of the dock as shown above. The left side is for charging only.
- The USB driver may not have been installed correctly. Please see [**Help for Unit Recognition Failure**] in the launcher or Start menu, and check the USB driver.

3. The [Remote Unit Registration] window will appear. Enter the desired Remote Unit Name and click [Register].
4. Follow the on-screen instructions and reconnect the USB cable to the Base Unit. A success message will appear when the registration is complete.

*If you wish to register other Remote Units, repeat procedures **2** to **4**.

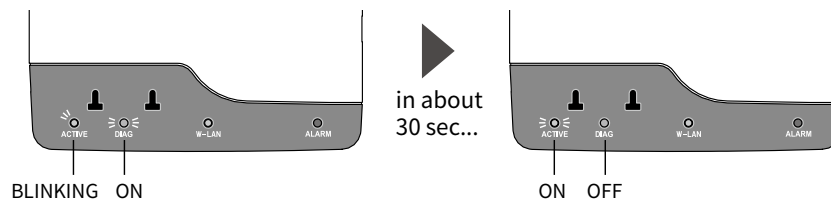
STEP 4 Installing the Device

 Make sure not to place the Remote Unit on the battery charge dock except when setting or registering via USB. Otherwise wireless communication may not be possible due to noise.

1. Connect the Base Unit to the wired or wireless LAN.

*If the target Base Unit is connected to a PC, disconnect the USB cable.

2. Connect to the power supply using the supplied AC adaptor.



*You will know network connection was established when <ACTIVE> on the LED changes from blinking to lit.

*If <ACTIVE> and <DIAG> are both blinking, network connection has failed; so please recheck the settings.

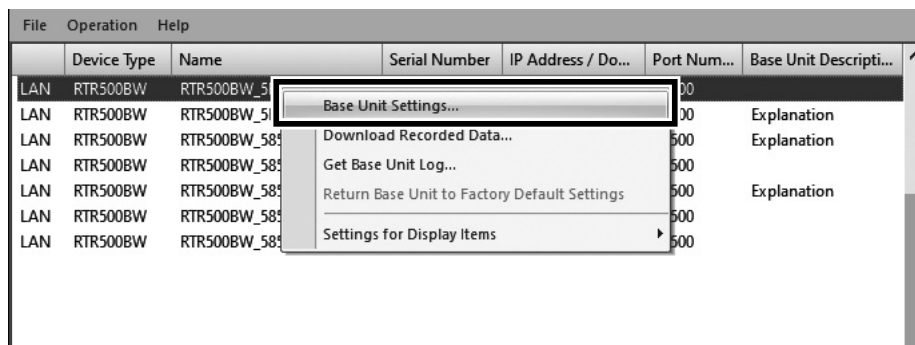
3. Deploy the Base Unit and Remote Unit(s) in the desired locations.

*The wireless communication range, if unobstructed and direct, is about 50 meters.

4. To check the signal strength between the Base Unit and Remote Unit, from the main window of **RTR500BW Settings Utility**, select [Operation] - [Search Network].

5. In a few seconds, a list of Base Units on the network will appear.

6. Right click the target Base Unit, and select [Base Unit Settings] in the pop-up menu. Enter the password and click [OK].

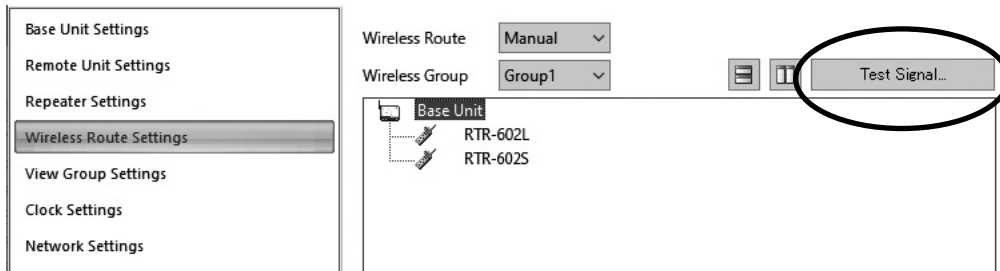


Password

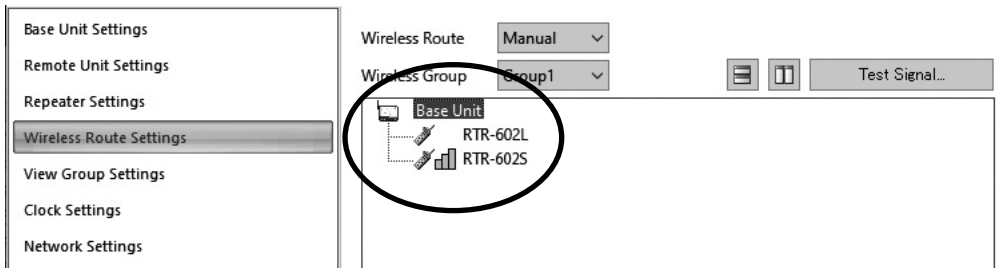
Remember this Password

OK Cancel




7. In the [Wireless Route Settings] window, click [Test Signal...].



8. Click [Start] to begin the signal check. When completed, click [Close]. The result will appear.



How to Read Signal Strength Results

	Communication is stable.
	Communication is unstable. If communication errors repeatedly occur, reposition the Remote Unit or add a Repeater.
	If no antenna mark appears a communication error has occurred. Try to reposition the Remote Unit or add a Repeater.

- Please refer to section [Notes and Precautions for Installing Wireless Communication Devices] under [RTR500B Series Safety Information].
- By using a Repeater, it is possible to extend the wireless communication range. For information about the Repeater Settings, refer to [Using as a Repeater] in the RTR500BC Getting Started Guide.

Registering a Base Unit to T&D WebStorage Service

The Base Unit collects and sends the Remote Unit's recorded data to T&D WebStorage Service automatically when it is set as the destination (default). To check the transmitted data, the Base Unit needs to be registered to T&D WebStorage Service.

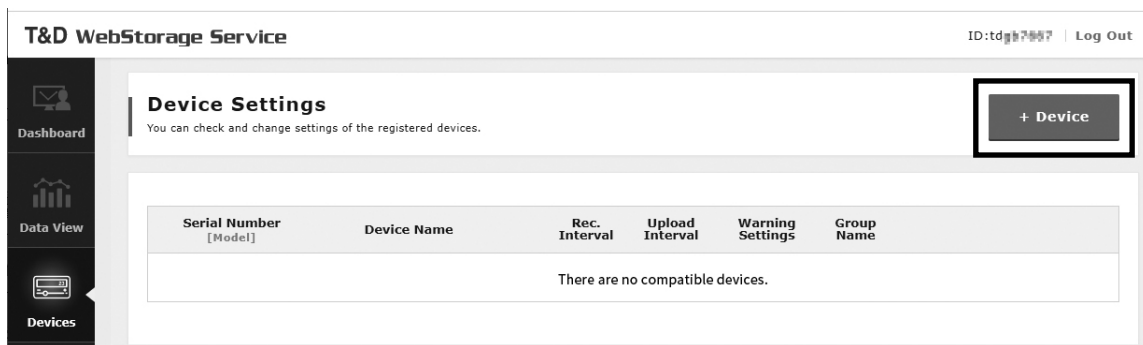
1. Open your browser and log in to T&D WebStorage Service.

www.webstorage-service.com

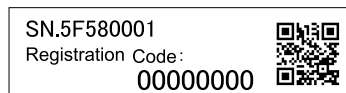
*If you have not already registered as a User, use the above URL and carry out a New User Registration.

2. From the screen's left-side menu, open [Device Settings].

3. In the upper right of the screen, click on [+Device].



4. Enter the serial number and registration code for the RTR500BW, then click [Add].

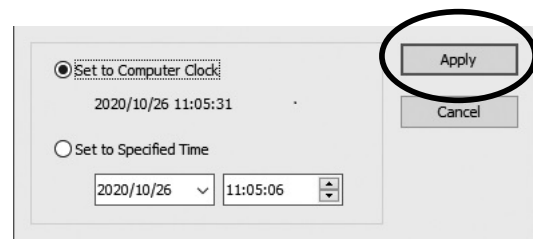
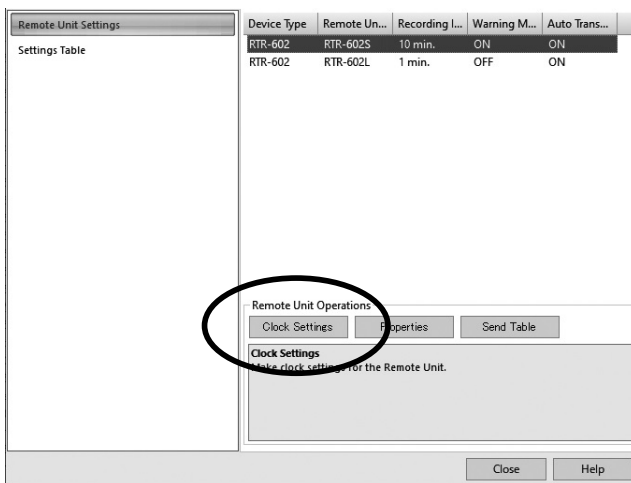


- The serial number and registration code can be found on the supplied Registration Code Label as shown above.
- If you have lost or misplaced the Registration Code Label, you can check it by connecting the Base Unit to your computer via USB and selecting [Settings Table] - [Base Unit Settings] in the **RTR500BW Settings Utility**.
- There is no need to register the RTR-600 Series.
- When registration is complete, the registered device will be displayed in a list on the [Device Settings] screen, and it will be shown to be in waiting for its first communication.

Remote Unit Settings: Using RTR-600 Settings Utility

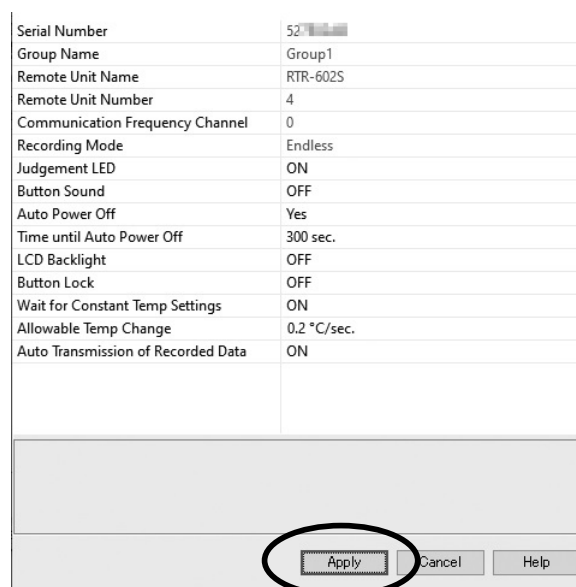
Making Clock and Operational Settings

1. Open RTR-600 Settings Utility.
2. From the main window, select [Operation] - [Search Network] to search for Base Units on the network.
3. Right click on the target Base Unit, and select [Base Unit Settings] in the pop-up menu. Enter the password and click [OK].
4. When the [Remote Unit Settings] window appears, select the target Remote Unit and click [Clock Settings]. Make settings and click [Apply].



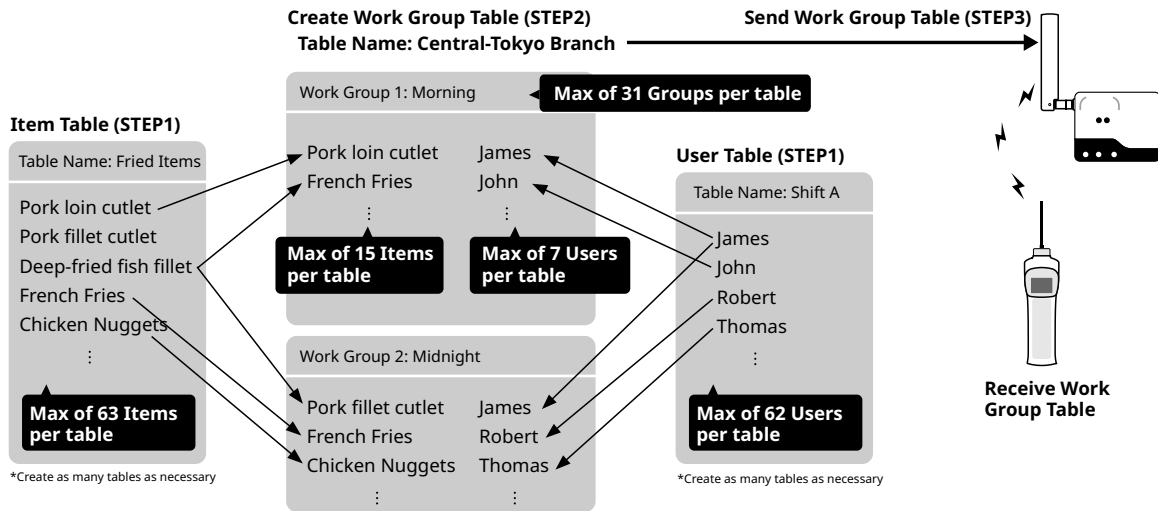
* If you have multiple Remote Units registered, make clock settings for all units.

5. To make or change operational settings, select the target Remote Unit, click [Properties], make settings and click [Apply].



Creating Work Group Tables

Work Group Table Image



STEP 1

Creating Item and User Tables

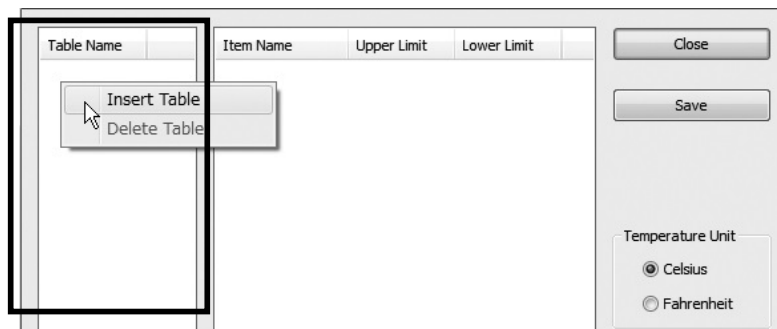
1. In the main window of **RTR-600 Settings Utility**, select [Item Table] or [User Table] from the [File] menu.

Item Table	You can create any number of tables and register up to 63 items in each table. Upper and lower limits can also be set for each item here.
User Table	You can create any number of tables and register up to 62 users in each table.

* Below, the screens and procedures are explained using the Item Table as an example.

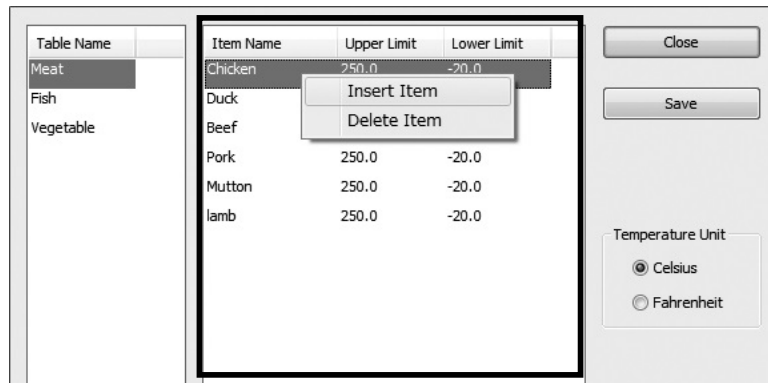
File	Operation	Help	Serial Number	IP Address / Domain	Port Number	Base Unit Description
Item Table...						
User Table...			W_585...	32...	192.168.0.100	62500
Work Group Table...			W_585...	3F...	192.168.0.100	62500
Exit			W_585...	4F...	192.168.0.100	62500
			W_585...	4F...	192.168.0.100	62500
LAN	RTR500BW	RTR500BW_585...	52...	10.2...	62500	Explanation
LAN	RTR-500NW	RTR-500NW_5F...	52...	10.2...	62500	Explanation
LAN	RTR-500AW	TandD Office (RTR-...	52...	192.168.0.100	62500	Weather data

2. Right click in the left side box, and select [Insert Table] from the pop-up menu. Set the table name.



3. To make or edit the item list for the inserted table, right click in the right side box and select from the [Insert Item] or [Delete Item] options. The item name, upper limit and lower limit can be set here.

• If you don't need to set upper and lower limits, leave them as they are.



4. Click [Save]. Follow the same steps to make a User Table.

- If you accidentally delete a table, close the window without saving and re-open it to recover the previously saved settings.
- Clicking [Save] here will not send the table info to the Remote Unit yet.

STEP 2 Creating Work Group Tables

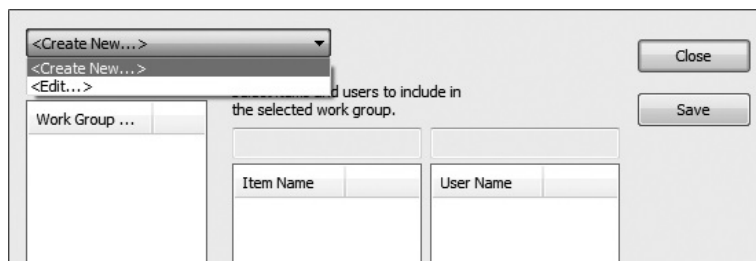
Using the above Item and User Tables, it is now possible to create Work Group Tables according to the operation process.

1. In the main window of **RTR-600 Settings Utility**, select [Work Group Table] from the [File] menu.

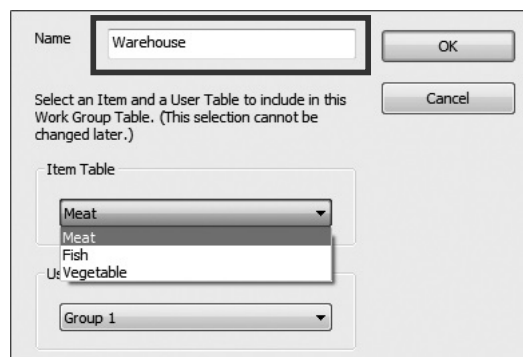
Work Group Table	One table can have up to 31 work groups, and one group can have up to 15 items and 7 users.
------------------	---

2. Select <Create New...> from the drop-down list at the top of the Work Group Table window.

The <Edit...> option allows you to rename or delete a Work Group Table.

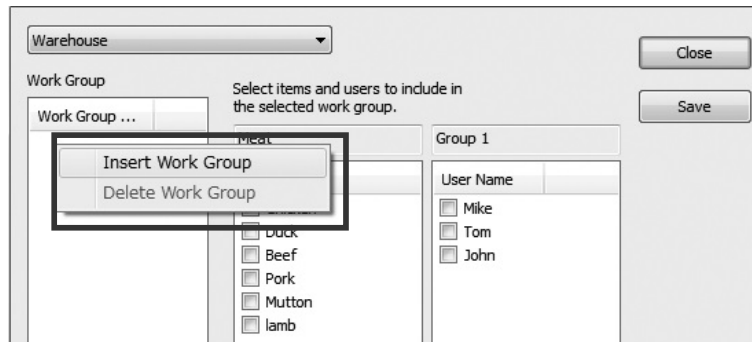


3. In the displayed window, enter a desired name for the Work Group Table and select the Item Table and User Table to be used. Click [OK].

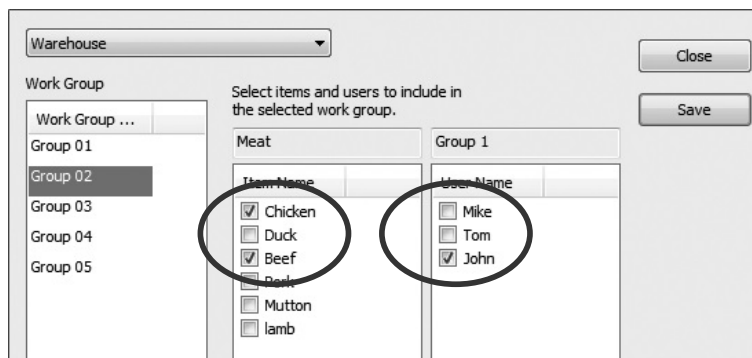


4. Select the name of the Work Group Table you just created.

5. Right click in the left side box and select [Insert Work Group]. Set the work group name.



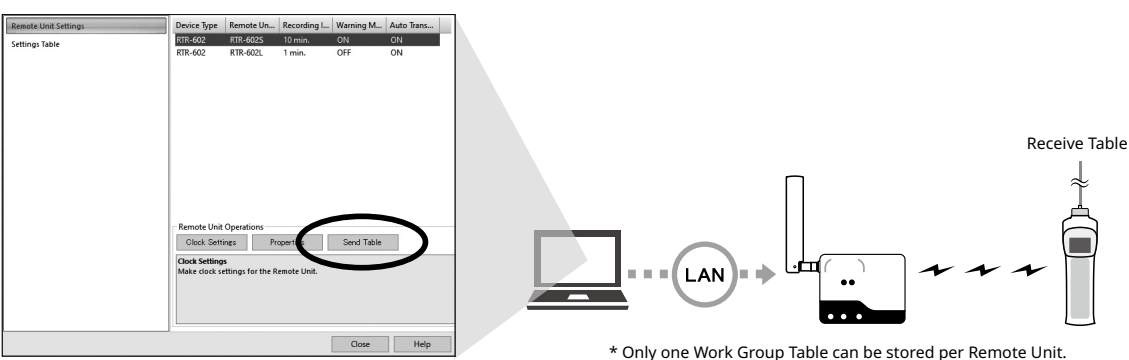
6. Check the Items and Users to register to that group. In one Work Group Table, you can create multiple Work Groups and register the selected Items and Users for each group. Click [Save].



STEP 3 Sending Work Group Tables to the Remote Unit

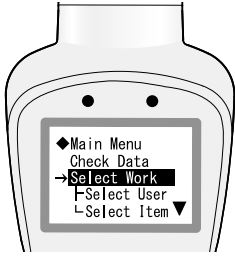
⚠ When performing the wireless communication, make sure to remove the Remote Unit from the battery charge dock to prevent communication failure due to noise.

1. From the main window, select [Operation] - [Search Network] to search for Base Units on the network.
2. Right click on the target Base Unit, and select [Base Unit Settings] in the pop-up menu. Enter the password and click [OK].
3. Select the target Remote Unit from the right hand list and click [Send Table]. Select a Work Group Table to send to the Remote Unit and click [Send].



* Only one Work Group Table can be stored per Remote Unit.

How to select the User and Item on the Remote Unit:



Go to RTR-602 MENU > [Select Work] > [Select User] > [Select Item]

- For each Work Group found under [Select Work], the Users and Items registered to each group will be displayed and can be selected.

Data Management and Operation

Check Data sent to T&D WebStorage Service

Recorded data from the RTR-600 Series which has been sent to T&D WebStorage Service can be viewed and downloaded using a web browser.

1. From the left-side menu of T&D WebStorage Service, click [Download] to open the Data Download page.

The screenshot shows the 'Data Download' page in the T&D WebStorage Service interface. The page title is 'Data Download' and it includes a sub-header 'Download recorded data files.' There are two tabs: 'By File' (selected) and 'By Product'. A button for 'Current Readings Files (XML)' is visible. The number of files in display is set to 50. The main table lists data records with columns: 'Date and Time Received', 'Record Period / File Name', and 'Number of Readings'. Each row has a checkbox and a 'Download' button. A red circle highlights the 'Download' button in the first row, with the word 'Download' written next to it.

<input type="checkbox"/>	Date and Time Received	Record Period / File Name	Number of Readings	Download
<input type="checkbox"/>	Oct-12-2020 07:03:01	Oct-05-2020 07:03:43 ~ Oct-12-2020 06:58:43 TandD Office (RTR-500AW)_2F(West)_20201012-070258.trz (17.95 KB)	2016	Download
<input type="checkbox"/>	Oct-12-2020 07:01:26	May-06-2020 13:08:48 ~ TandD Office (RTR-500AW)_2F(East)_20201012-070124.trz (3.63 KB)	0	Download
<input type="checkbox"/>	Oct-12-2020 07:01:16	Oct-05-2020 07:01:01 ~ Oct-12-2020 06:56:01 TandD Office (RTR-500AW)_OUTSIDE_20201012-070114.trz (11.89 KB)	2016	Download
<input type="checkbox"/>	Oct-05-2020 07:02:50	Sep-28-2020 07:03:19 ~ Oct-05-2020 06:58:19 TandD Office (RTR-500AW)_2F(West)_20201005-070246.trz (17.95 KB)	2016	Download
<input type="checkbox"/>	Oct-05-2020 07:01:22	May-06-2020 13:08:49 ~ TandD Office (RTR-500AW)_2F(East)_20201005-070119.trz (3.63 KB)	0	Download

2. Click the [Download] button for the recorded data you wish to download.
If you wish to download multiple recorded data files, place a check next to the data, and click the [Download] button.

- The recorded data downloaded and saved on your computer can be viewed using **RTR-600 Data Viewer**.

Clicking the file name in the list will open the details of the recorded data.

- The RTR-600 Series data files have an extension of .prz.

The screenshot shows the RTR-600 Data Viewer interface. It displays a table of recorded data and a section for current settings. The table has columns for Time, Work Group, Item Name, User Name, Temperature, and Judgement. The current settings section includes items like Group Name, Remote Unit Name, Frequency Channel, Item Name, User Name, Recording Mode, Button Sound, Judgement LED Settings, Backlight, Wait for Constant Temp Settings, Current Recorded Data Number, and Time Difference from GMT.

Device Name: kitchenB	Serial Number: 527E0228	Number of Readings: 8				
1	Oct-26-2020 16:10:32	West	Pork	Alan	39.1	OK
2	Oct-26-2020 16:10:42	West	Pork	Alan	39.6	OK
3	Oct-26-2020 16:10:48	West	Pork	Alan	39.7	OK
4	Oct-26-2020 16:11:00	West	Pork	Alan	39.7	OK
5	Oct-26-2020 16:11:11	West	Pork	Alan	39.6	OK
6	Oct-26-2020 16:11:23	West	Pork	Alan	38.9	OK
7	Oct-26-2020 16:12:14	West	Pork	Alan	38.5	OK
8	Oct-26-2020 16:13:30	West	Pork	Alan	37.9	OK

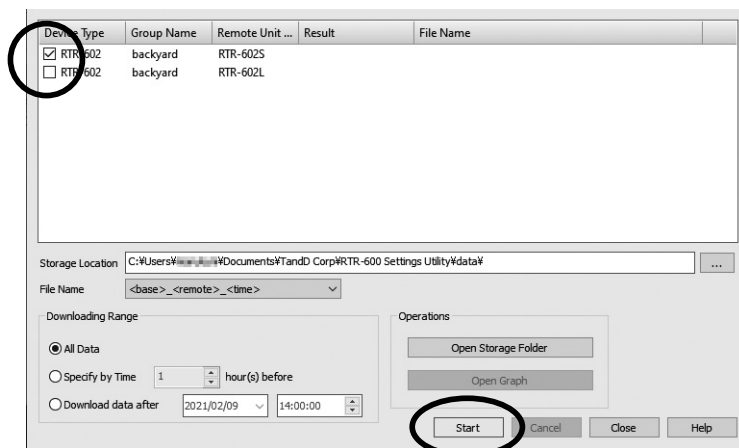
Item	Value
Group Name	West
Remote Unit Name	kitchenB
Frequency Channel	0
Item Name	Pork
User Name	Alan
Recording Mode	Endless
Button Sound	OFF
Judgement LED Settings	ON
Backlight	ON in Use
Wait for Constant Temp Settings	0.2
Current Recorded Data Number	26
Time Difference from GMT	+09:00

Manage Data on PC

Downloading Recorded Data Manually

To download RTR-600 Series recorded data to a computer without using a server, follow the steps below.

1. Connect the RTR500BW with the supplied USB or LAN cable to your computer.
2. Place the RTR-600 Series within the wireless communication range of RTR500BW (50 meters).
3. Open **RTR-600 Settings Utility**.
4. **When communicating via LAN:** From the main window, select [Operation] - [Search Network] to search for Base Units on the network.
5. Right click on the target unit, and select [Download Recorded Data] in the pop-up menu.
When communicating via LAN: Enter the password and click [OK].
6. In the Downloading Recorded Data window, place a check mark next to the target Remote Unit, and click [Start] to start downloading.
 - Downloaded data will be saved as a recorded data file in the specified storage folder.
 - Recorded data stored in the PC can be viewed using **RTR-600 Data Viewer**.



Viewing Recorded Data via RTR-600 Data Viewer

RTR-600 Series recorded data is saved as a prz file. Use the RTR-600 Data Viewer application to view the data.

Storage Location of Recorded Data (default)

C:\Users\Login User Name\Documents\TandD Corp\RTR-600 Settings Utility\data\

1. From the Windows Start Menu, open **RTR-600 Settings Utility - RTR-600 Data Viewer**.
2. In the [File] menu, click [Open] and then open the selected file from the storage location.

No.	Time	Work Group	Item Name	User Name	Temp.	Judgement
1	10/26/2020 00:01:59	Warehouse	Beef	Tom	25.8	OK
2	10/26/2020 00:02:20	Warehouse	Beef	Tom	25.8	OK
3	10/27/2020 00:02:37	Warehouse	Mutton	Jon	25.7	OK
4	10/27/2020 00:03:40	Warehouse	Mutton	Jon	25.9	OK
5	10/27/2020 00:03:55	Warehouse	Pork	Jon	26.0	OK
6	10/28/2020 00:04:28	Warehouse	Lamb	Mike	26.0	OK
7	10/28/2020 00:04:31	Warehouse	Beef	Mike	25.9	OK
8	10/28/2020 00:04:57	Warehouse	Beef	Mike	25.8	OK
9	10/28/2020 00:05:26	Warehouse	Pork	Mike	25.4	OK
10	10/28/2020 00:05:57	Warehouse	Beef	Mike	25.6	OK
11	10/30/2020 00:08:40	Warehouse	Lamb	Tom	25.7	OK
12	10/30/2020 00:09:15	Warehouse	Beef	Tom	25.6	OK
13	10/30/2020 00:09:32	Warehouse	Pork	Tom	25.6	OK
14	10/31/2020 00:10:15	Warehouse	Lamb	Mike	25.3	OK
15	10/31/2020 00:10:43	Warehouse	Mutton	Mike	25.2	OK

Item	Value
Group Name	West
Remote Unit Name	KitchenB
Frequency Channel	0
Item Name	Pork
User Name	Alan
Recording Mode	Endless
Temperature Unit Setting	°C
Button sound	OFF
Judgement LED Settings	ON
Backlight	ON in Use
Wait for Constant Temp Set...	0.2
Current Recorded Data Num...	26
Time Difference from GMT	+09:00

* You can open the manually downloaded data and the data downloaded from T&D WebStorage Service. (RTR-600 Data Viewer cannot be opened from T&D WebStorage Service.)

Deleting Selected Data

In the opened data table, select unnecessary data (using the [Ctrl] or [Shift] key to select several sets of data), and go to [Edit] > [Delete Line of Choice].

Loading Additional Data Files

It is possible to add new data files to the already loaded file(s) and view several sets of data in one table. When the data table is open, go to [File] > [Open] and select the additional file. To save these files as one file, go to [File] > [Save All Data As...].

- The saved files are in .puw format and can be opened with **RTR-600 Data Viewer**.

Saving Data as Text File

It is possible to convert recorded data to text format which can be read by common spreadsheet software. When the data table is open, go to [File] > [Save Data in Text File].

- Text format files cannot be opened by **RTR-600 Data Viewer**.

RTR500BW Specifications

Compatible Devices	Remote Units: RTR-602S / 602L / 602ES / 602EL, RTR-601-110 / 130 / E10 / E30 Repeaters: RTR500BC, RTR-500
Maximum Number of Registrations	Remote Units: 50 units Repeaters: 10 units x 4 groups
Communication Interfaces	Short Range Wireless Communication Frequency Range: 902 to 928MHz RF Power: 7mW Transmission Range: About 50 meters (if unobstructed and direct) Wired LAN (RJ45 connector 100 Base-TX/10 Base-T) Wireless LAN (IEEE 802.11 a/b/g/n, WEP(64bit/128bit) / WPA-PSK(TKIP) / WPA2-PSK(AES)) Bluetooth® 4.2 (Bluetooth Low Energy) For Settings *1 USB 2.0 (Mini-B connector) For Settings Optical Communication (proprietary protocol)
Communication Time	Data Download Time (for 16,000 readings) Via wireless communication: About 2 minutes An additional 30 seconds should be added for each Repeater. *2
External Output Terminal:	PhotoMOS Relay Output OFF-State Voltage: AC/DC 50V or less ON-State Current: 0.1 A or less ON-State Resistance: 35Ω
Communication Protocol *3	HTTP, HTTPS, FTP, SNMP, DHCP
Power	AC Adaptor (AD-05A4) PoE (IEEE 802.3af)
Dimensions	H 83 mm x W 102 mm x D 28 mm (excluding antenna) Antenna Length: 115 mm
Weight	Approx. 130 g
Operating Environment	Temperature: -10 to 60°C Humidity: 90%RH or less (without condensation)

*1: RTR-600 Series loggers do not have Bluetooth capability.

*2: When using RTR500BC as Repeater. Depending upon conditions it may take up to an additional 2 minutes.

*3: Client Function. Communication via proxy is not supported.

The specifications listed above are subject to change without notice.